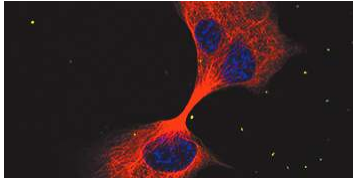


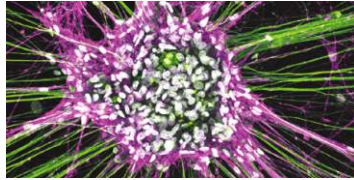
Immunofluorescence has never been this easy~

ibidi μ -Dish & μ -Slide 讓免疫螢光染色變得更輕鬆便利

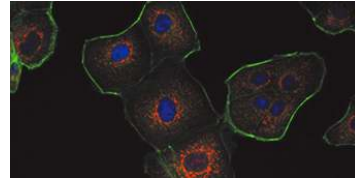
- 大幅提高操作便利性，從細胞培養、染色到影像擷取 “All-in-one” Slide/Dish 完成，一氣呵成高效便利！
- 絕佳的成像品質，即使是高倍率顯微鏡觀察也沒問題，影像清晰易觀測。
- 優越的培養特性，適合各類細胞貼附生長。
- 化學耐受性佳，多種常用細胞固定劑與油鏡油皆可適用。



PC12 cells
Stained for β -III-Tubulin (red) and DAPI (blue)
ibidi product used: [\$\mu\$ -Dish 35 mm, high](#)



Rat dorsal root ganglionic cells and Schwann cells
Stained for Neurofilament (green), NGFR (magenta),
and DAPI (white)
ibidi product used: [\$\mu\$ -Slide 8 Well](#)



Madin-Darby canine kidney (MDCK) cells
Stained for F-actin (green), Mitochondria (red),
and DAPI (blue)
ibidi product used: [\$\mu\$ -Slide VI 0.4](#)




[\$\mu\$ -Dish & \$\mu\$ -Slide 詳細說明](#)



任買 3 盒 μ -Dish / μ -Slide 產品 就送 ibidi 原廠螢光封片膠

活動詳情請洽伯森業務專員 | 活動截止日：2024/5/31



ibidi Mounting Medium With DAPI
Pack Size 15ml/pk
Cat. No. [IB-50011](#)



μ -Dish Family | μ -Dish 35 mm Quad



μ -Slide 1 Well | 2 Well | 4 Well | 8 Well^{high} | 18 Well



3 Well | 8 Well | 12 Well Chamber, removable



Culture-Insert 2 Well | 3 Well | 4 Well



μ -Slide VI 0.5 Glass Bottom | μ -Slide VI 0.4



μ -Slide 15 Well 3D



μ -Slide Chemotaxis



Bioinert μ -Slides and μ -Dishes



μ -Slide 1 Luer 3D



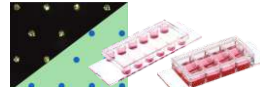
μ -Slide Spheroid Perfusion



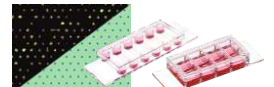
μ -Slide III 3D Perfusion



μ -Slide ibiPore SIN



μ -Slides With Multi-Cell μ -Pattern



μ -Slides With Single-Cell μ -Pattern

